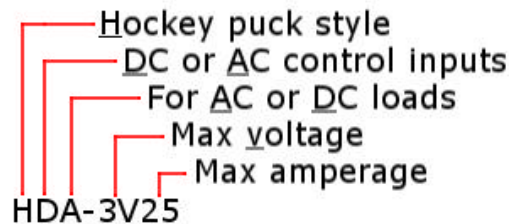


Power-io is a worldwide supplier of power switching products for industrial, HVAC, commercial or military applications. By using customized SCR, thyristor, alternistor or mosfet technology results in outstanding performance in a variety of applications. Using advanced DCB Direct Copper Bonding technology, and the trademarked Maximum Surge Survival™ design; Power-io has created a family of solid state switching products that provide outstanding performance in a wide variety of applications.



H Family

- One industry-standard size = easy to install
- Internationally accepted green LED for control input indication
- Triple layer Maximum Surge Survival design for protection against AC voltage surges
- Oversized internal SCR thyristors (AC switching) or Mosfets and IGBTs (DC switching)
- Clear snap-on safety cover for finger safe protection is included (IP20 protection)



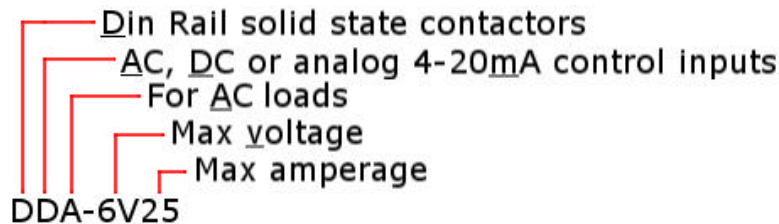
Power-io's AC switching provides an "ultra-precise" zero crossing turn-on for reduced EMI without extra noise filters. Very high dV/dT performance reduces false triggering.

Power-io's DC switching SSRs are the fastest commercial SSRs in the world, with a 15Khz switching speed and low leakage. These SSRs are used for PWM loads and DC applications.

Part Number	Max output Volts AC / Amps	Part Number	Max output Volts DC / Amps
DC Input-AC Output		DC Input-DC Output	
HDA-3V25	330/25	HDD-06V75	60/75
HDA-3V50	330/50	HDD-1V20	100/20
HDA-3V75	330/75	HDD-1V40	100/40
HDA-6V50	660/50	HDD-2V25	200/25
HDA-6V75	660/75	HDD-6V15	600/15
AC Input-AC Output		Heat Sinks:	°C/Watt
HAA-3V25	330/25	HEATSK-DIN-1.6	(lower = better cooling) 1.6
HAA-3V50	330/50	HEATSK-DIN-1.0	1.0
HAA-3V75	330/75	HEATSK-3PK-1.2	3 Pack@ 1.2 per SSR
HAA-6V50	660/50	HEATSK-6PK-1.2	6 Pack@ 1.2 per SSR
HAA-6V75	660/75	HEATSK-UPC-DCFan	0.20
		HEATSK-UPC-ACFan	0.20
		THERMAL-PAD-005	5/package
		HDD_DIODE	Diode for DC Loads

D Family of Din Rail mounted contactors

- Din rail or screw mounted attachment — fast installations
- Internationally accepted green LED for control input indication
- Internationally accepted terminal numbering (L1, T1, A1+, A2-)
- Finger safe, caged terminals — stripped wire requires no additional preparation
- Maximum Surge Survival and advanced DCB (Direct Copper Bonding) for high performance
- Excellent thermal efficiency — only 1 to 1.4 watts heat dissipated per amp switched
- Optimized heat sink is built-in
- High dV/dT and high blocking voltage specifications ensure a long life
- Thermal shutdown circuit and built-in I²T fuse is available in the 50, 75, or 100 amp models



Part Number	Max output Volts/Amps
DC Input-AC Output	
DDA-6V25	660/25
DDA-6V40	660/40
DDA-6V50	660/50
DDA-6V75	660/75
DDA-6V100	660/100
AC Input-AC Output	
DAA-6V25	660/25
DAA-6V40	660/40
DAA-6V50	660/50
DAA-6V75	660/75
DAA-6V100	660/100
4-20 mA Analog Input, AC Output	
DMA-6V25	660/25
DMA-6V40	660/40

3 Phase models:

- Can switch up to 25 amps on 3 legs or 35 amps on 2 legs. The heat sink is rated for 75 amps total.
- The DC control input is any voltage from 10-60 VDC and just 3.5mA to 6 mA. This is compatible with most temperature controllers, process controllers and any PLC power supply.

DC Input-AC Output, 3 phase

DDA3-5V75T-H	575/75T/MOVs
DDA3-6V75T-H	660/75 Total/10-60vdc in

AC Input-AC Output, 3 phase

DAA3-5V75T-H	575/75T/MOVs
DAA3-6V75T-H	660/75 Total

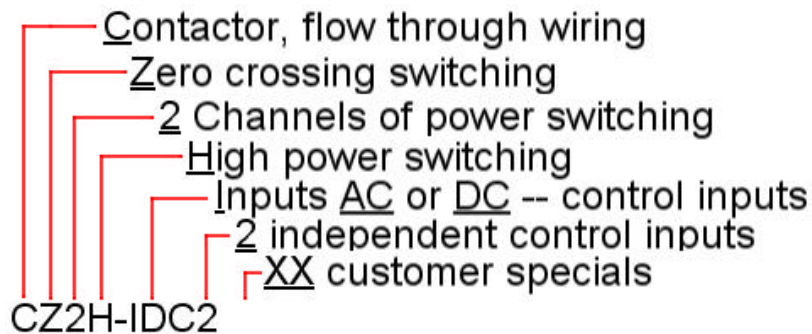
4-20 mA Analog Input-AC Output, 3 phase

DMA3-6V75T	660/75 Total
------------	--------------

C Family of din rail mounted contactors

High Power — small size — great features — ultra rugged

- Two channels of up 100 amps each. Two individual loads, 2-leg-break delta loads, or gang several units together for high density three phase loads.
- Smallest solid state contactor available — only 80 mm wide (~3.15 x 7 x 7 inches) for TWO channels. Less than 7 x 7 x 7 inches for 4 channels, etc.
- No installation space is needed between units on the same din rail. The high density design provides power channels every 1.6 inches; resulting in a clean, consistent panel layout. Small size assists in retrofit applications in place of mechanical or mercury contactors.
- High amperage inrush capability. Internal SCRs are rated for up to 180 amps for up to 2 seconds. High inrush capability is required with incandescent lamp loads, certain heaters, and when used in motor starting applications.
- Internationally accepted green LEDs for control input indication
- Internationally accepted terminal numbering (L1, T1, A1+, A2-)
- Finger safe, caged terminals — stripped wire requires no additional preparation
- Maximum Surge Survival and advanced DCB (Direct Copper Bonding) for high performance
- Excellent thermal efficiency and rugged mechanical design for industrial reliability.
- Optimized heat sink is built-in. The heat sink can be mounted outside the cabinet in certain applications. Contact Power-io for more information on customized solutions.
- Highest dV/dT and high blocking voltage specifications ensure a long life
- Internal temperature monitoring circuit and thermal shutdown feature in all models.
- DC control input models include a complete diagnostics circuit and an Alert output. An Alert output will activated upon SCR health problems, external power problems (open fuse, no power), external load problems (open load), and thermal problems.



Part Number

CZ2H-IAC2
CZ2H-IDC2

Channels/Max Volts/Max Amps

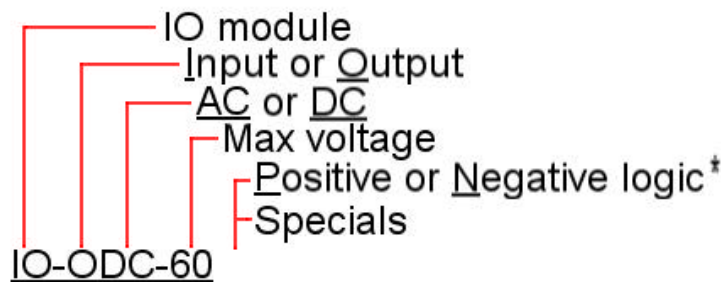
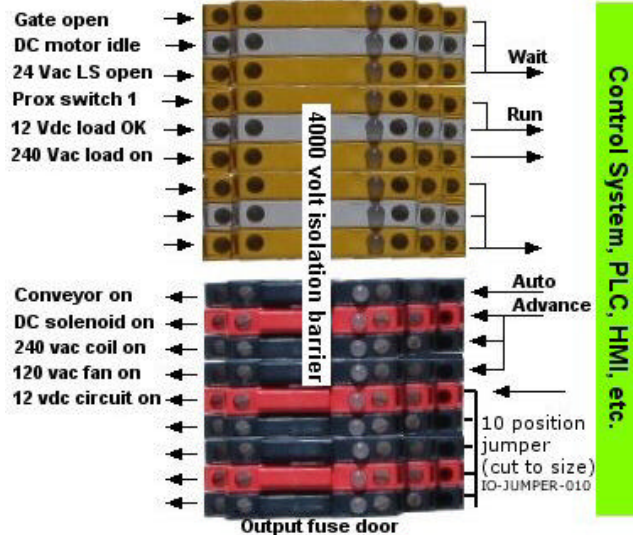
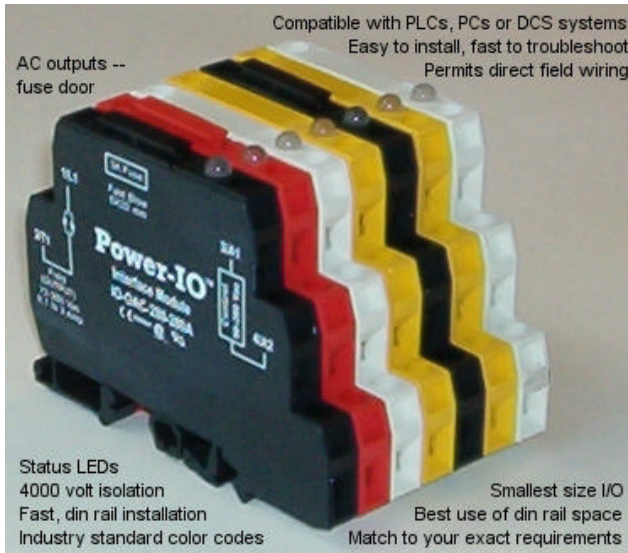
2CH/575/100each
2CH/ 575/100each

Inputs

VAC control inputs
VDC control inputs + Alert output

IO Modules

- Provides 4000 volt isolation between field devices and your control system
- Permits a wide variety of inputs types to be directly compatible with your control system
- Output modules accept TTL signals, PLC outputs, or process controller outputs and provide a standard 3 amp switching AC or DC solid state output.
- Output modules have a replaceable 3 amp fuse
- Smallest I/O modules available — only .30 inches (7.5mm) wide
- As easy to install as a standard terminal block
- Low cost. Protect expensive PLC cards and reduce system damage and/or system downtime.
- Internationally accepted green LEDs for control logic status indication



* Input logic status is similar to normally open vs. normally closed. Examples of this are online at: <http://www.power-io.com/products/iac.htm>

Part Number	Logic
IO-IAC-280-N	No Vac in = DC out hi
IO-IDC-028-N	No Vdc in = DC out hi
IO-IAC-280-P	Positive Vac in=DC out hi
IO-IDC-028-P	Positive Vdc in=DC out hi
IO-OAC-280	Vdc logic = AC out
IO-OAC-280-280A	Vac logic = AC out
IO-ODC-60	Vdc logic = DC out
IO-ODC-60-LL	Vdc logic = DC out

Jumper strips for I/O:

I.O.-JUMPER-010 10 position

Marker tags for I/O:

I.O.-MARKER-001 Num. 1-10
I.O.-MARKER-011 Num. 11-20

Power-io products are stocked, supported and distributed by:

THERMAL TECH EQUIPMENT

2704 NE 78th St
Kansas City, MO 64119
Tel: (816) 468-7577

<http://www.ttequip.com/>